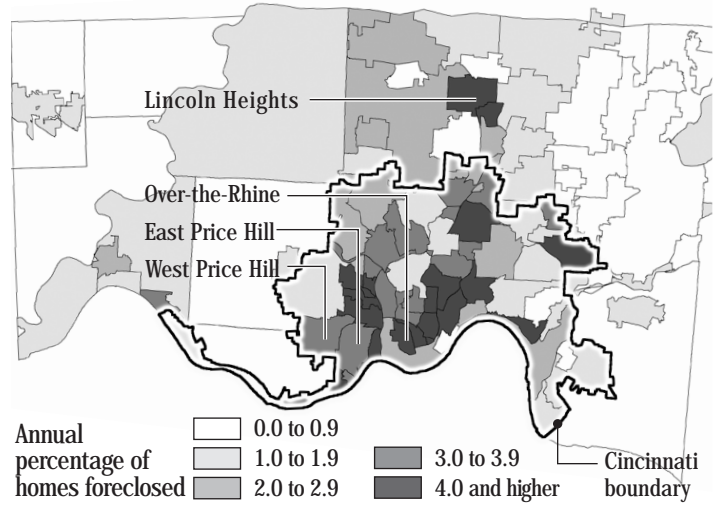


FORECLOSURES BY NEIGHBORHOOD

More than half of 97 Cincinnati and Hamilton County neighborhoods have foreclosure rates that exceed the national average of 1.2 percent of homes.



NOTE: Cincinnati neighborhoods shaded

City/Township	Foreclosures 1999-2002	Foreclosure rate*	City/Township	Foreclosures 1999-2002	Foreclosure rate*
Addyston	22	2.7	Miami Twp.	77	0.5
Amberley Village	56	1.1	Millvale	9	6.1
Anderson Twp.	262	0.5	Montgomery	54	0.4
Arlington Heights	20	2.3	Mount Adams	4	0.3
Avondale	255	5.1	Mount Airy	80	1.4
Blue Ash	115	0.8	Mount Auburn	165	5.2
Bond Hill	263	3.5	Mount Healthy	93	1.5
California	7	1.2	Mount Lookout	26	0.3
Camp Washington	16	2.8	Mount Washington	69	0.5
Carthage	58	2.4	Newtown	29	1.1
Cheviot	145	1.4	North Avondale	166	3.1
Cleves	65	2.2	North Bend	4	0.6
Clifton	60	1.0	North College Hill	187	1.6
Clifton Heights	43	2.6	North Fairmount	94	4.7
Colerain Twp.	852	1.2	Northside	258	3.2
College Hill	303	2.0	Norwood	304	1.6
Columbia Tuscolum	36	6.3	Oakley	94	0.9
Columbia Twp.	70	0.9	Over-the-Rhine	89	22.0
Corryville	49	5.2	Paddock Hills	27	3.3
Crosby Twp.	15	0.4	Pendleton	9	5.8
Deer Park	63	0.8	Pleasant Ridge	107	1.2
Delhi Twp.	254	0.7	Reading	139	1.2
East End	26	1.8	Riverside	42	4.1
East Price Hill	331	3.0	Roselawn	148	3.3
East Walnut Hills	62	1.8	Saint Bernard	63	1.2
East Westwood	69	7.9	Sayler Park	40	1.2
Elmwood Place	54	2.8	Sedamsville	36	2.4
English Woods	4	7.1	Sharonville	103	0.8
Evanston	292	4.0	Silverton	113	2.0
Evendale	20	0.5	South Cumminsville	36	2.8
Fairfax	24	1.0	South Fairmount	189	11.1
Fay Apartments	4	2.1	Springdale	125	1.2
Forest Park	501	2.7	Springfield Twp.	690	1.5
Glendale	27	0.8	Sycamore Twp.	183	0.8
Golf Manor	76	1.9	Symmes Twp.	62	0.4
Green Twp.	401	0.5	Terrace Park	27	0.9
Greenhills	34	0.8	University Heights	87	2.8
Harrison	24	0.2	Walnut Hills	176	6.2
Harrison City	81	1.0	West End	86	5.3
Hartwell	58	2.1	West Price Hill	379	2.4
Hyde Park	72	0.5	Westwood	329	1.4
Indian Hill	30	0.4	Whitewater	37	0.6
Kennedy Heights	139	2.4	Winton Hills	4	0.8
Lincoln Heights	152	6.8	Winton Place	66	3.1
Linwood	11	1.3	Woodlawn	108	3.8
Lockland	73	2.4	Wyoming	76	0.7
Loveland	37	0.3			
Lower Price Hill	37	10.6	Ohio		2.3
Madeira	48	0.4	Kentucky		1.2
Madisonville	365	3.7	Indiana		2.4
Maniement	20	0.6	United States		1.2

*Annual percentage of foreclosures of owner-occupied homes

Source: Hamilton County Clerk of Courts, *Enquirer* research The Cincinnati Enquirer/RANDY MAZZOLA